

# Generation Next Bunk Bed Instruction Sheet

Read All Instructions Before Assembling Bed. Keep Instructions For Future Use.

## PARTS LIST

Qty Box	# Items in Box	Description of Items
1	2 per Box	Top section Headboard & Footboard (Tall Frames)
1	2 per Box	Bottom section Headboard & Footboard (Short Frames)
1	4 per Box	Side Rails (2 Bottom & 2 Top) packaged with Slat Braces
	12 per Box	Slat Braces (Qty 12) packaged with Side Rails
1	1 per Box	Ladder (packaged in box with Guard Rails)
	2 per Box	Guard Rails (1 Front & 1 Back) packaged with Ladder

## PARTS LIST HARDWARE

Qty	Item	Description
1 Bag	Hardware Package <b>"A"</b>	<i>Hardware Package "A" contains:</i> (8) 60mm Long Birch Dowels (4) 3/8 Diameter x 3 1/2 long Steel Stacking Dowels (48) Screws for Slat Brackets #6 x 1 1/4
1 Bag	Hardware Package <b>"B"</b>	<i>(Packaged in Ladder/ Guard Rail Box)</i> (2) Ladder Hooks (screw into pre-drilled holes) (10) Joint Connector Bolts (10) Joint Connector Nuts (1) Allen Wrench (2) Ladder Brackets (8) Screws 1 1/2" Long (For Ladder Brackets & Ladder Hooks)
1 Bag	Hardware Package <b>"C"</b>	<i>(Packaged in Ladder/ Guard Rail Box)</i> <i>Consists of 2 Bags of Hardware containing:</i> (8) Pressure Plates (8) Pressure Plate Nuts (per bag) (8) Fully Threaded Rods (per bag) (1) Wrench (per bag)



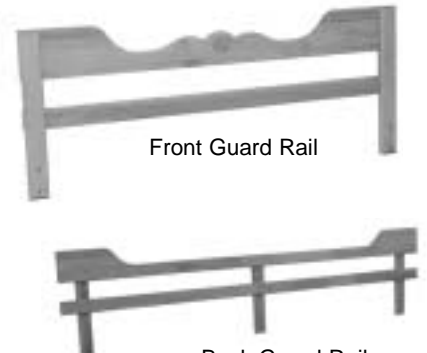
Top Section Headboard & Footboard



Bottom Section Headboard & Footboard

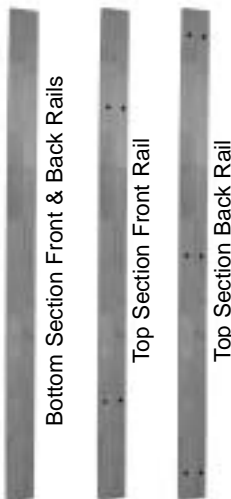


Ladder



Front Guard Rail

Back Guard Rail



Bottom Section Front & Back Rails

Top Section Front Rail

Top Section Back Rail



Slat Brace



Ladder Bracket



Pressure Plate Nut



Wrench



Allen Wrench



Ladder Hook



Pressure Plate



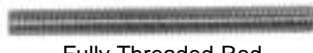
1 1/4" Screw



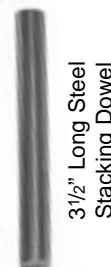
1 1/2" Screw



60mm Long Birch Dowel



Fully Threaded Rod



3 1/2" Long Steel Stacking Dowel



Joint Connector Bolt



Joint Connector Nut

# GENERATION NEXT BUNK BED ASSEMBLY INSTRUCTIONS

Read all warnings and information before assembly!

- Step 1:** Remove the Side Rails (Qty 4) from the Side Rail box. Look at the ends of the Side Rails and you will see (three) holes in each end. In the Ladder Guard Rail box you will find a Hardware Package marked "A" and a Hardware Package marked "C". Open Hardware Package "A" and remove the (eight) 60mm Long Birch Dowels. Insert the Dowels into the center hole in each end of the (four) Side Rails.



- Step 2:** Remove the top section (Headboard & Footboard) from the box.

- Step 3:** In the Hardware Package "C" you will find (eight) Fully Threaded Rods, (eight) Pressure Plate Nuts, (eight) Pressure Plates and one wrench.



- Step 4:** The (eight) Fully Threaded Rods will now need to be screwed into the inserts, located in the posts, on the top section (Headboard & Footboard). You should be able to screw the Fully Threaded Rods into the inserts with your fingers. Screw the rods in until it bottoms out in the inserts.



- Step 5:** You will now need to locate the (two) Side Rails that have holes drilled in the face of the rails. One of these rails has (six) holes drilled in the face. The rail with the (six) holes is the Back Rail that will face the wall or will be on the back side. The rail with the (four) holes will be on the front side.



Step 6



- Step 6:** The Side Rails can now be attached to the top section Headboard. Make sure that the notches on the Side Rail are facing upward.

- Step 7:** To attach the Side Rail to the top section Headboard you will need to slide the Fully Threaded Rods, located in the posts, into the holes in the end of the Side Rail. Slide the two pieces together until the Dowel, located in the end of the Side Rail, goes into the hole in the post.

- Step 8:** From Hardware Package "C", you will now need (two) of the (eight) Pressure Plates, (two) of the (eight) Pressure Plate Nuts and your wrench. The large diameter holes located on the inside end of the Side Rail is where you must now place the Pressure Plates over the ends of the Fully Threaded Rods. Place the nut over the end of the Fully Threaded Rod and finger tighten the nut. Now you must use your wrench to fully tighten the nuts. You can now attach the Front Side Rail to the Front Post on the top section Headboard.



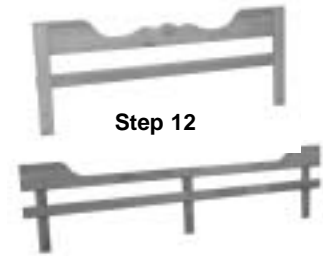
- Step 9:** After the two Side Rails are attached to the top section Headboard, you will now need to attach the top section Footboard to the Side Rails. (For this step you will need someone to help lift the Rails and help feed the Fully Threaded Rods into the holes located in the ends of the Side Rails). After the Footboard and Side Rails are slid together, you will need to tighten the Pressure Plate Nuts the same way you did on the Headboard assembly.



- Step 10:** You will now need to open the box containing the bottom section Headboard & Footboard. To assemble the bottom section Headboard & Footboard to the Side Rails, you will need to repeat the same procedure as you did to assemble the top section. The Side Rails for the bottom section are the same, it doesn't matter which one you use for the front or the back. (Keep in mind that the notches on the inside of the Side Rail Cleats must be facing upward). After assembly of the bottom section (Headboard & Footboard) to the rails, you are now ready to stack the two sections.

**Step 11:** The bottom assembly should now be placed in the desired room location. Locate the four 3 1/2" Long Steel Stacking Dowels from your Hardware Package "A". You now need to insert the Steel Stacking Dowels into the holes located in the top cap of the bottom assembly. (You may need to tap in with hammer).

**Step 12:** Now is the time to attach the Front and Back Guard Rails to the top section assembly (this is easier to do when the top section assembly is still on the floor). Remove the Ladder and Guard Rails from their box. You will also find Hardware Package "B" in this box. The Long Guard Rail is for the back side, and the Short Guard Rail is for the front side.



**Step 13:** Locate the (ten) Joint Connector Bolts and the (ten) Joint Connector Nuts. You will need these connectors to attach the Guard Rails to the Bed Rails. (You will find them in Hardware Package "B"). The Joint Connector Nuts should now be placed in the holes in the Bed Rails (from the inside). Now you simply line up the holes in the Guard Rail with the holes in the Bed Rail and insert and tighten the Joint Connector Bolts using the Allen Wrench.



Step 14

**Step 14:** Now you are ready to place the Top Bed Assembly on top of the Bottom Bed Assembly. (You will need help for this step). Lift the top bed assembly above the stacking Dowels (located in the top caps of the Bottom Bed Assembly). Line up the stacking Dowels with the holes in the bottom of the top bed posts, and lower the Top Bed Assembly down.



**Step 15:** Now you will need to attach the Slat Braces to the top and bottom bed rail cleats. The cleats on the bed rails are notched out to locate the Slat Braces. Place all of the Slat Braces into the notches in the bed rail cleats and screw in place using (48) 1 1/4" Screws provided in Hardware Package "A".



Step 15

**Step 16:** You will now need your Ladder, (2) Ladder Hooks, (2) Ladder Brackets, and (8) 1 1/2" Screws. You will find all of these items in Hardware Package "B". At the top of the Ladder (on the backside) you will see (four) pilot holes drilled into the posts. Position the Ladder Hooks as shown in (Step 16) and screw in place. The Ladder must now be lifted at a 45° angle to slide in place. After the Ladder is mounted in the desired location, you must now attach the Ladder Bracket (as shown in Step 16). First slide the Ladder Bracket down on the bottom side rail in line with the backside of the Ladder Post. Make sure that the angle on the bracket is in line with the angle on the post. Using the 1 1/2" screws provided in Hardware Package "B", you must now screw the screws in place using a Phillips Head Screwdriver. Repeat the above steps to mount the other Ladder Bracket.

Step 16

Step 16  
Ladder Hook



Step 16  
Ladder Bracket



# GENERATION NEXT BUNK BED TO TWIN BED ASSEMBLY INSTRUCTIONS

To make two Twin Beds from the Bunk Bed you must do the following steps:

## FROM SCRATCH:

- Step 1:** Follow Steps 1 through 8 of the Bunk Bed assembly instructions. (The top section Head & Foot is now the two Headboards for the Twin Bed)
- Step 2:** You will now need to open the box containing the bottom section Headboard and Footboard. (The bottom section Headboard and Footboard is the two Footboards for the Twin Beds)  
You will now need to screw the Fully Threaded Rods into the inserts located in the Footboards. (Screw the rods in until they bottom out).
- Step 3:** After the two Side Rails are attached to the Headboard you will now need to attach the rails to the Footboard. (For this step you may need someone to help lift the Side Rails and help feed the Fully Threaded Rods into the holes located in the ends of the Side Rails). After the Footboard and Side Rails are slid together you will need to tighten the Pressure Plate Nuts the same way you did in Step 8 of the Bunk Bed assembly instructions. (Do not over tighten! This will bend the wrench).
- Step 4:** To assemble the other Twin Bed (repeat Steps 1 through 3 above).

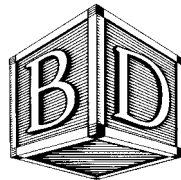


TO HELP PREVENT SERIOUS OR FATAL INJURIES FROM ENTRAPMENT OR FALLS  
PLEASE READ ALL WARNINGS AND INFORMATION CAREFULLY.

# WARNINGS & INFORMATION PLEASE READ!

## KEEP THESE INSTRUCTIONS FOR FUTURE REFERENCE

- ✓ Use only a mattress which is 74" to 75" long and 37 $\frac{1}{2}$ " to 38 $\frac{1}{2}$ " wide on the upper bunk. Use a bunkie board and a mattress or a mattress with a built in bunkie board. Ensure thickness of mattress and foundation combined does not exceed 6" and mattress is at least 5" below upper edge of guard rails.
- ✓ **DO NOT** allow children under 6 years of age to use the upper bunk.
- ✓ Use guard rails on both sides of the upper bunk.
- ✓ Prohibit horseplay on or under bed.
- ✓ Prohibit more than one person on upper bunk.
- ✓ Use ladder for entering or leaving upper bunk.
- ✓ If the bunk bed will be placed next to a wall, the guard rail that runs the full length of the bed should be placed against the wall to prevent entrapment between the bed and the wall.
- ✓ Replacement parts, including additional guard rails, may be obtained from any Baby's Dream Furniture dealer. **Do not** substitute parts.
- ✓ Follow the information on the warning labels that appear on the upper bunk end structure and on the carton. **Do not** remove label from bed.
- ✓ Always use the recommended size mattress or mattress support, or both, to help prevent the likelihood of entrapment or falls.
- ✓ Surface of mattress must be at least 5" below the upper edge of the guard rails.
- ✓ **Do not** allow children under 6 years of age to use the upper bunk.
- ✓ Periodically check and ensure that the guard rails, ladder, and other components are in their proper position, free from damage, and that all connectors are tight.
- ✓ Use of a nightlight may provide added safety precautions for a child using the upper bunk.
- ✓ The use of water or sleep floatation mattress is prohibited.



BABY'S DREAM  
FURNITURE, INC.

Buena Vista, GA 31803-0579

[www.babysdream.com](http://www.babysdream.com)

